

双面印刷

180.00 mm

基本参数:

飞控处理器: STM32F722RET6

电调处理器: AT32F421G8U7

飞控固件: Betaflight (BETAFPVF722)

电调固件: BLHeli_32

陀螺仪: ICM42688

PWM频率: 24 ~ 128K

黑匣子: 16M

BEC: 5V 3A

OSD: Betaflight OSD (AT7456E)

电源: 2 ~ 6S LiPo

安装孔: 25.5*25.5mm

重量: 9.0g

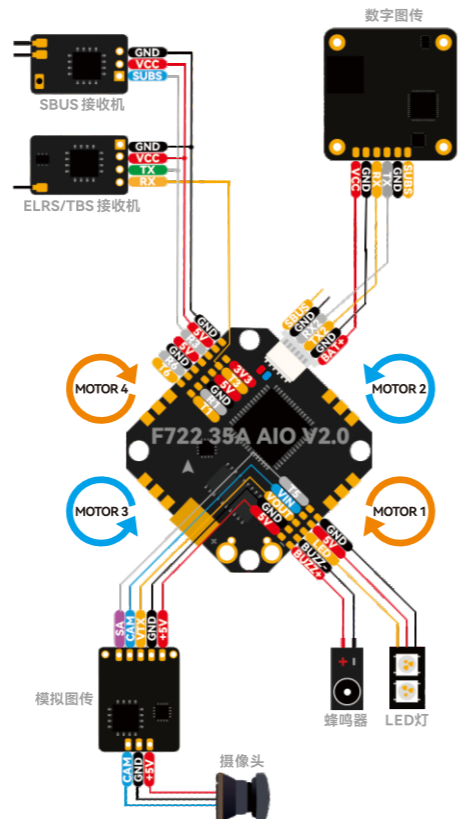
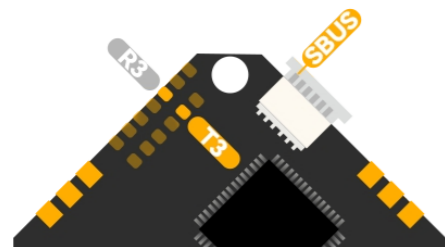
尺寸: 33*33mm

特别提示:

1.按照飞控默认的安装方向使用时,应当连接Betaflight Configurator,在配置页面将陀螺仪方向由CW 180°改为CW 270°。



2. SBUS端口对应UART3端口,若使用UART3端口连接其他外设,需断开数传端子的SBUS接线。



| 指示灯颜色 | 状态 | 描述 |
|---------|-------|------|
| ● 电源指示灯 | 常亮 | 通电 |
| ● 飞控指示灯 | 闪烁/熄灭 | 电机上锁 |
| ● 飞控指示灯 | 常亮 | 电机解锁 |

135.00 mm

180.00 mm

SPECIFICATION:

FC MCU: STM32F722RET6

ESC MCU: AT32F421G8U7

FC Firmware: Betaflight(BETAFPVF722)

ESC Firmware: BLHeli_32

Gyro: ICM42688

PWM Frequency: 24 ~ 128K

Black Box: 16M

BEC: 5V 3A

OSD: Betaflight OSD(AT7456E)

Input: 2 ~ 6S LiPo

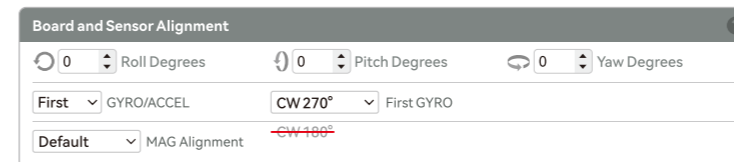
Mounting: 25.5*25.5mm

Weight: 9.0g

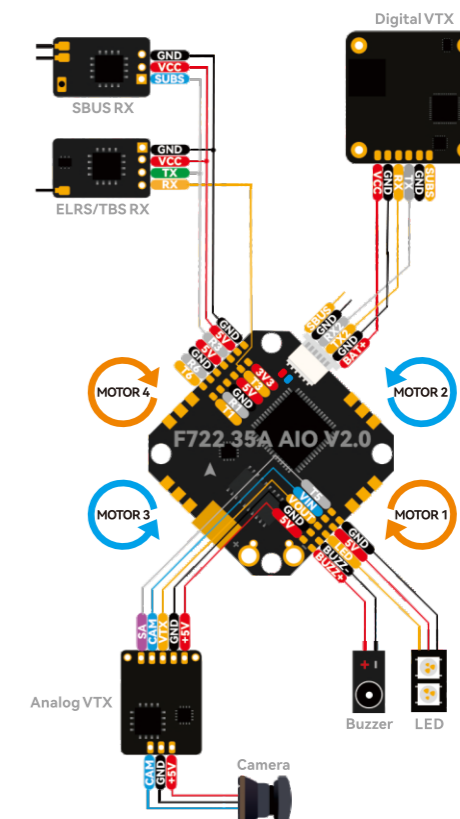
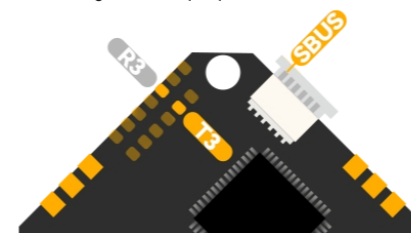
Size: 33*33mm

WIRING GUIDE:

1. When using the FC in the default installation direction, please connect to Betaflight Configurator and change the gyro direction from CW 180° to CW 270° on the Configuration page.



2. The SBUS port corresponds to the UART3 port. To ensure proper functioning, it is necessary to disconnect the SBUS wiring of the data transmission terminal when utilizing the UART3 port for connecting additional peripherals.



| Indicator Light | Status | State Description |
|-------------------------|--------------|-------------------|
| ● Power Indicator Light | Solid On | Power on |
| ● FC Indicator Light | Flash On/Off | Disarmed |
| ● FC Indicator Light | Solid On | Armed |

135.00 mm